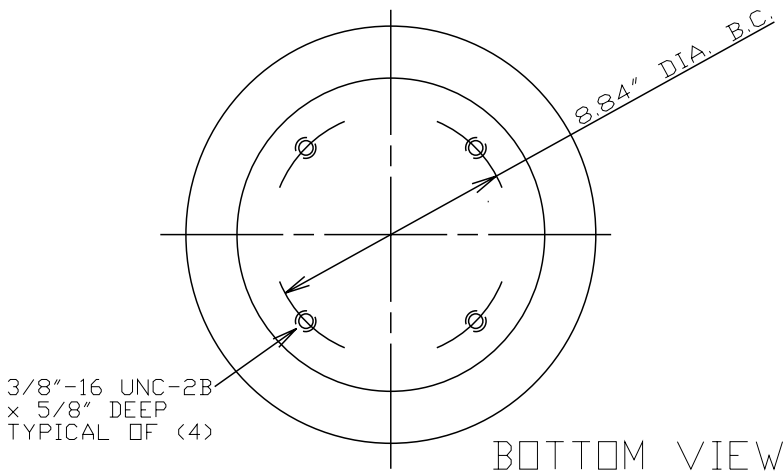
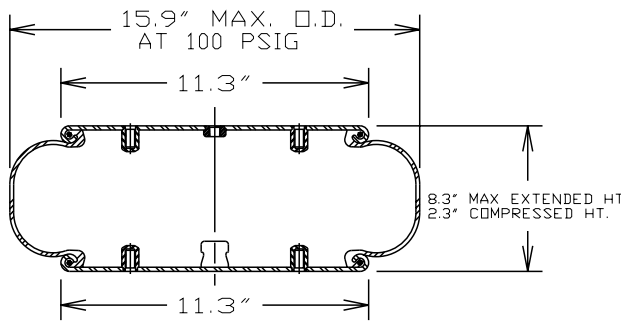
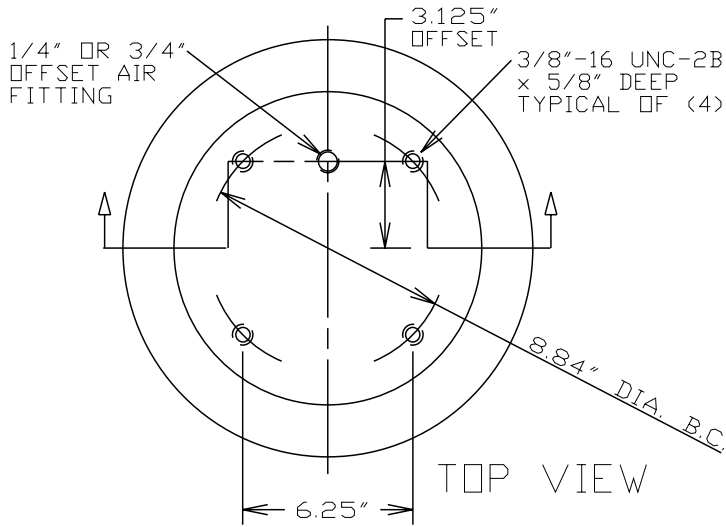


1B14-364



ASSEMBLY NUMBER	ELASTOMER	AIR FITTING	BUMPER INCLUDED
1B14-364	NAT. RUBBER	1/4"-18 NPTF OFFSET 3.125"	NO
1B14-362	NAT. RUBBER	3/4"-14 NPTF OFFSET 3.125"	NO
578913352 FLEX MEMBER ONLY	NAT. RUBBER	----	---

SPRING FEATURES:

- LOAD RANGE (ISOLATOR).....2200-13500 lb
- DESIGN HEIGHT RANGE (ISOLATOR)....3.25-5.25 in
- USEABLE STROKE (ACTUATOR).....6.0 in
- ASSEMBLY WEIGHT.....16.3 lb
- TEMPERATURE RANGE.....*
- FORCE TO COMPRESS AT 0 PSIG (APPROX.)....60 lb
- NOMINAL FREE STANDING HT. AT 0 PSIG.....4.6 in

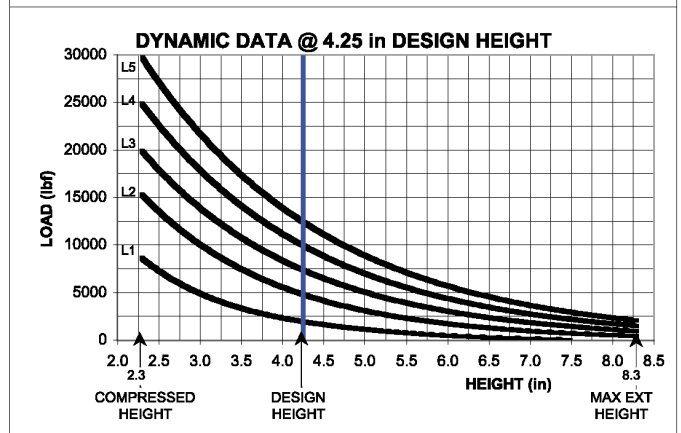
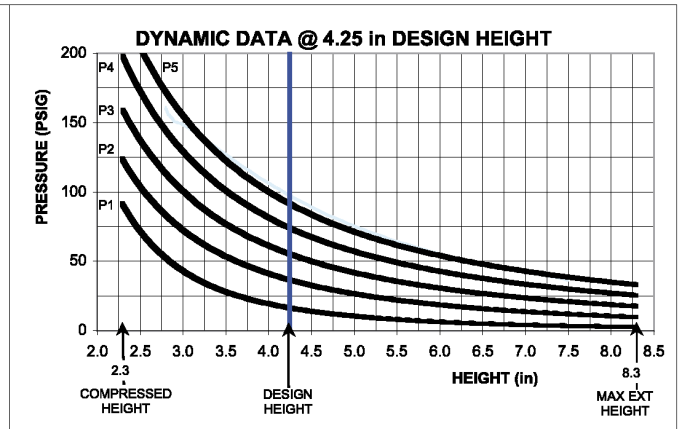
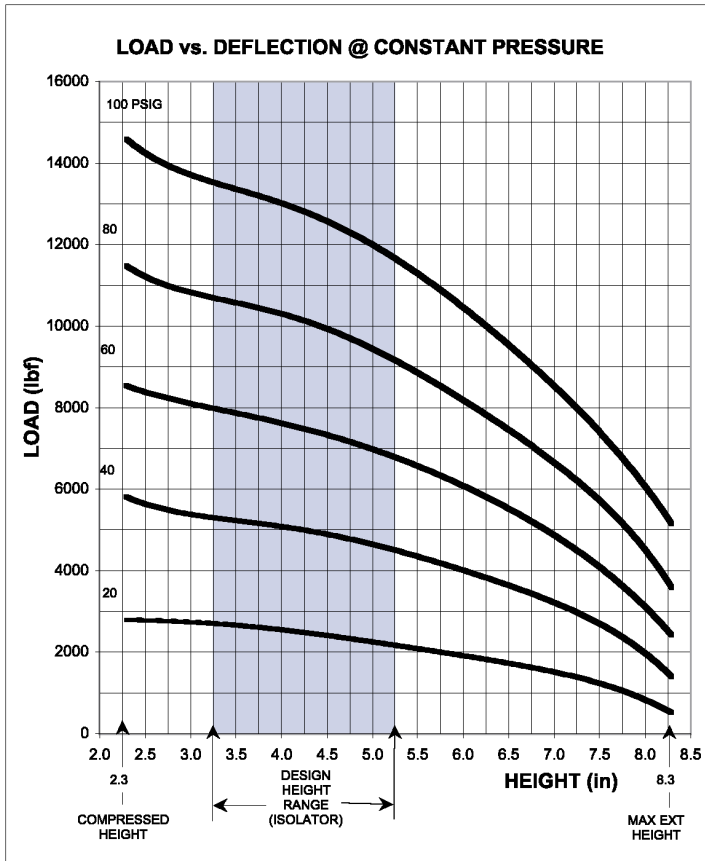
* NOTE: PRODUCT LIFE MAY BE SHORTENED WHEN OPERATING AT OR NEAR EXTREME TEMPERATURES. SEE TEMPERATURE RANGE GUIDELINES SECTION.

RECOMMENDED MAX. TORQUE VALUES

3/8"-16 UNC BLIND TAP TYP. OF (8)	1/4"-18 UNC AIR FITTING	3/4"-14 UNC AIR FITTING
300 in-lb 25 ft-lb	240 in-lb 20 ft-lb	240 in-lb 20 ft-lb

NOTE: SEE GUIDELINES FOR PROPER APPLICATION OF THIS PRODUCT

GRAPHS FOR REFERENCE ONLY - USE THE CHART DATA BELOW FOR DESIGN WORK



****NOTE: MAXIMUM INFLATION PRESSURE IS 100 PSIG. MAXIMUM JOUNCE PRESSURE IS 200 PSIG. IF YOUR APPLICATION WILL EXCEED THESE LIMITS, CONSULT A GOODYEAR REPRESENTATIVE FOR APPLICATION ASSISTANCE.**

CONSTANT PRESSURE CHARACTERISTICS

Assembly Height (In)	Volume @ 100 PSIG (In ³)	Nominal Force (lb)				
		@ 20 PSIG	@ 40 PSIG	@ 60 PSIG	@ 80 PSIG	@ 100 PSIG
8.3	1054	580	1500	2500	3600	4800
7.5	976	1250	2600	4000	5600	7200
7.0	920	1500	3100	4800	6500	8400
6.0	793	1900	4000	6100	8200	10400
5.25	692	2200	4500	6800	9100	11600
4.25	554	2500	5000	7500	10100	12800
3.25	417	2600	5300	8000	10700	13500
3.0	383	2700	5400	8100	10800	13700
2.5	317	2800	5600	8500	11400	14400
2.3	290	2800	5700	8700	11700	14800

DYNAMIC CHARACTERISTICS

Design Height (in)	Load (lb)	Pressure (PSIG)	Spring Rate (lb/in)	Natural Frequency	
				cpm	Hz
5.25	2400	22	1250	135	2.25
	5000	44	2180	124	2.07
	7500	66	3020	119	1.98
	10000	88	3860	116	1.93
4.25	2400	19	1505	149	2.48
	5000	40	1530	133	2.22
	7500	59	3455	128	2.13
	10000	79	4400	125	2.08
3.25	12400	97	5220	122	2.03
	2400	17	1970	170	2.83
	5000	37	3205	150	2.50
	7500	55	4390	144	2.40
3.25	10000	74	5465	139	2.32
	12400	91	6540	137	2.28