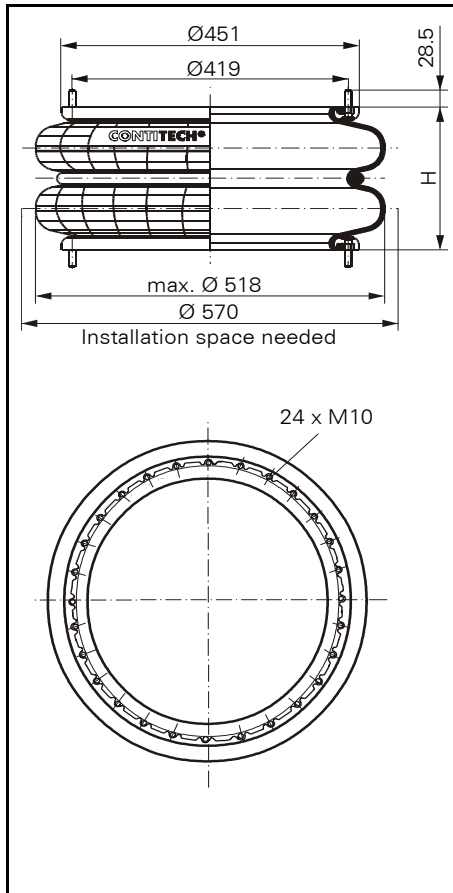
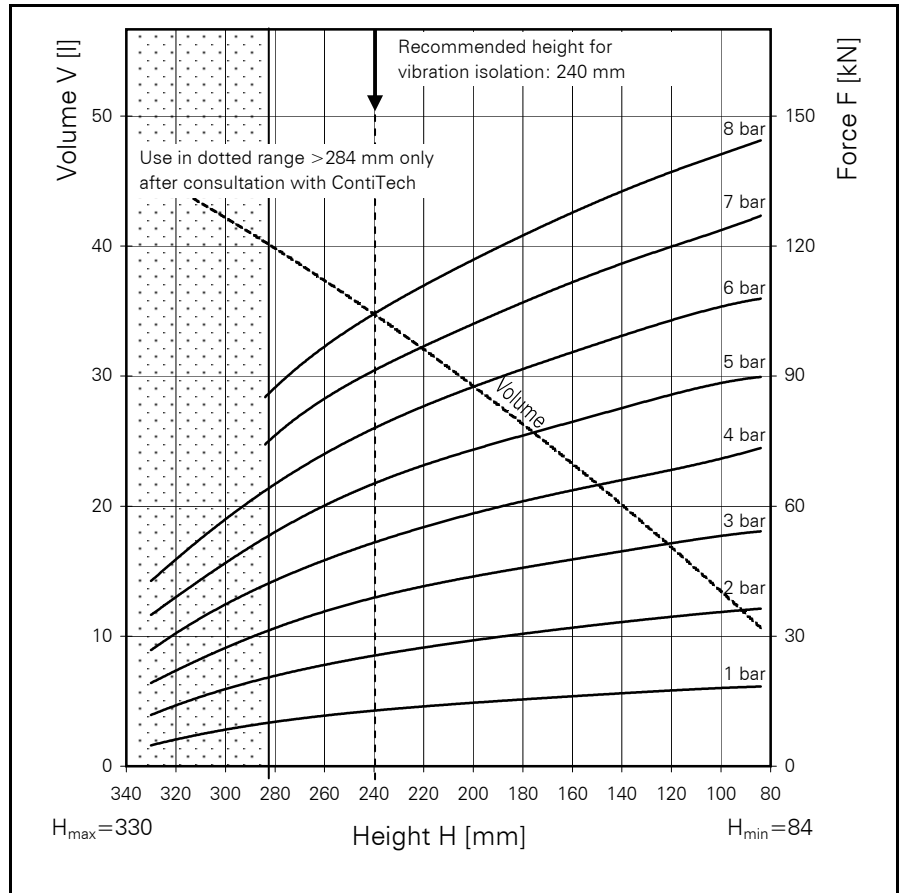


FD 1330-25

CONTI® Double Convolution Air Spring



FD 1330-25



Force-height diagram

Purchase order data

Type	Order No.
Rubber bellows only	61779
Bellows with bead rings 45mm bolts, nuts and washers	61904

Additional types on request

Technical data

Min. pressure	0 bar
Return force to min. height	≤ 178 N
Overall weight with clamped plates	10.2 kg

Vibration isolation - dynamic characteristic values

Design height H: recommended 240mm, minimum 220mm

Pressure p [bar]	3	4	5	6	7	8	Vol V [l]
Force (Load) [kN]	39.0	51.4	65.3	77.8	91.1	103.9	
Spring rate [N/cm]	4140	5370	6510	7640	8740	9960	
Natural frequency [Hz]	1.6	1.6	1.6	1.5	1.5	1.5	

Pneumatic application - static characteristic values

Force F [kN]

Pressure p [bar]	3	4	5	6	7	8	Vol.[l]	
Height H [mm]	270	34.1	45.9	57.6	69.2	81.1		92.8
	240	39.0	51.4	65.3	77.8	91.1		103.9
	210	42.4	56.5	70.9	85.2	99.4		114.0
	180	45.8	61.2	76.5	91.8	107.3		122.7
	150	48.7	64.9	81.0	97.3	113.5		129.9
	120	51.4	68.4	85.7	102.8	119.9		137.0

Service instructions  
M 10 = 40 Nm