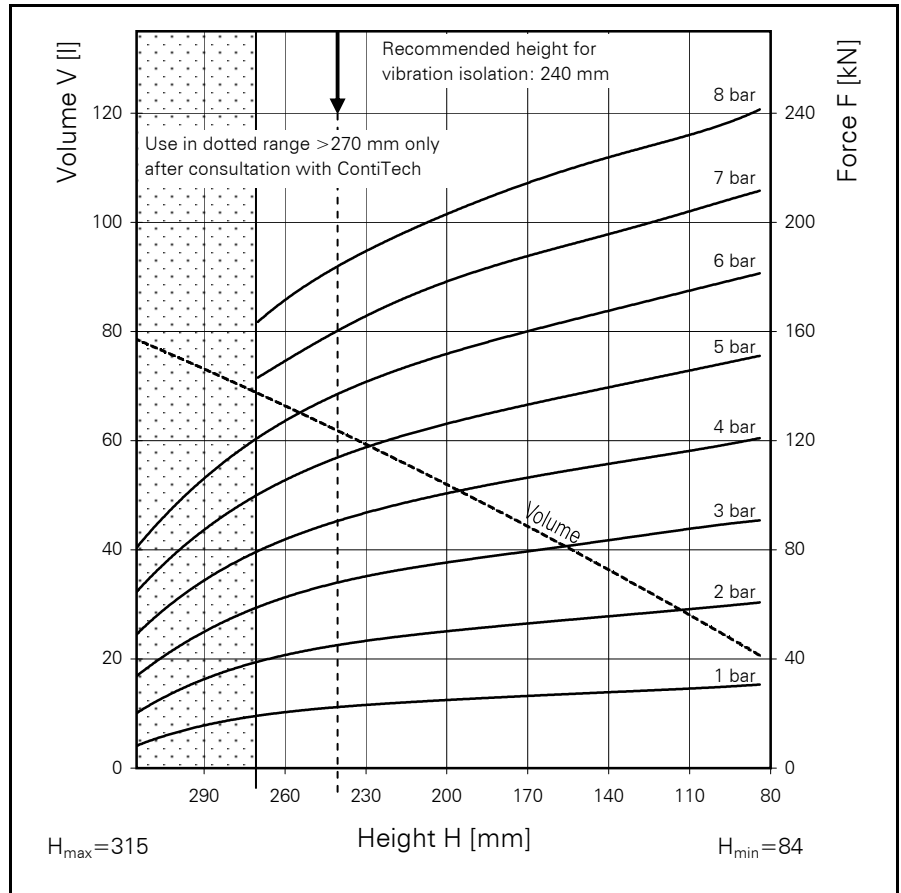
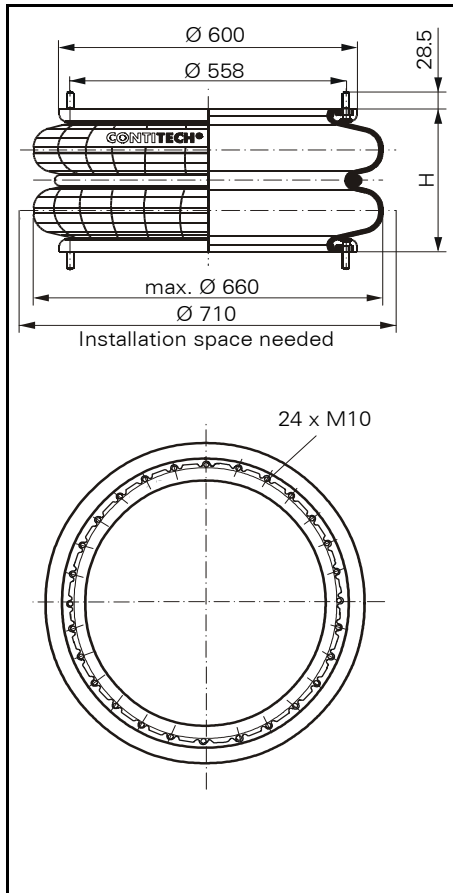


FD 2380-24

CONTI® Double Convolution Air Spring



FD 2380-24

Force-height diagram

Purchase order data

Type	Order No.
Rubber bellows only	61781
Bellows with bead rings 45mm bolts, nuts and washers	61906

Additional types on request

Technical data

Min. pressure	0 bar
Return force to min. height	≤ 445 N
Overall weight with clamped plates	14.1 kg

Vibration isolation - dynamic characteristic values

Design height H: recommended 240mm, minimum 220mm

Pressure p [bar]	3	4	5	6	7	8	Vol V [l]
Force (Load) [kN]	69.2	90.5	114.9	137.6	161.4	186.1	
Spring rate [N/cm]	7220	9050	11120	12990	14920	16950	
Natural frequency [Hz]	1.6	1.6	1.6	1.5	1.5	1.5	

Pneumatic application - static characteristic values

Force F [kN]

Pressure p [bar]	3	4	5	6	7	8	Vol.(l)	
Height H [mm]	260	62.7	83.8	105.5	127.5	149.4		171.6
	240	68.0	90.7	113.9	137.2	160.5		184.0
	220	72.0	96.2	120.5	145.1	169.8		194.4
	200	74.8	100.3	125.8	151.3	179.0		202.8
	180	78.2	104.8	131.1	157.6	184.3		210.8
	160	81.4	108.4	135.8	163.3	190.7		218.2
	140	83.3	111.2	139.3	167.2	195.3		223.3
	120	86.1	114.7	143.5	172.4	201.3		229.5

Service instructions
M 10 = 40 Nm