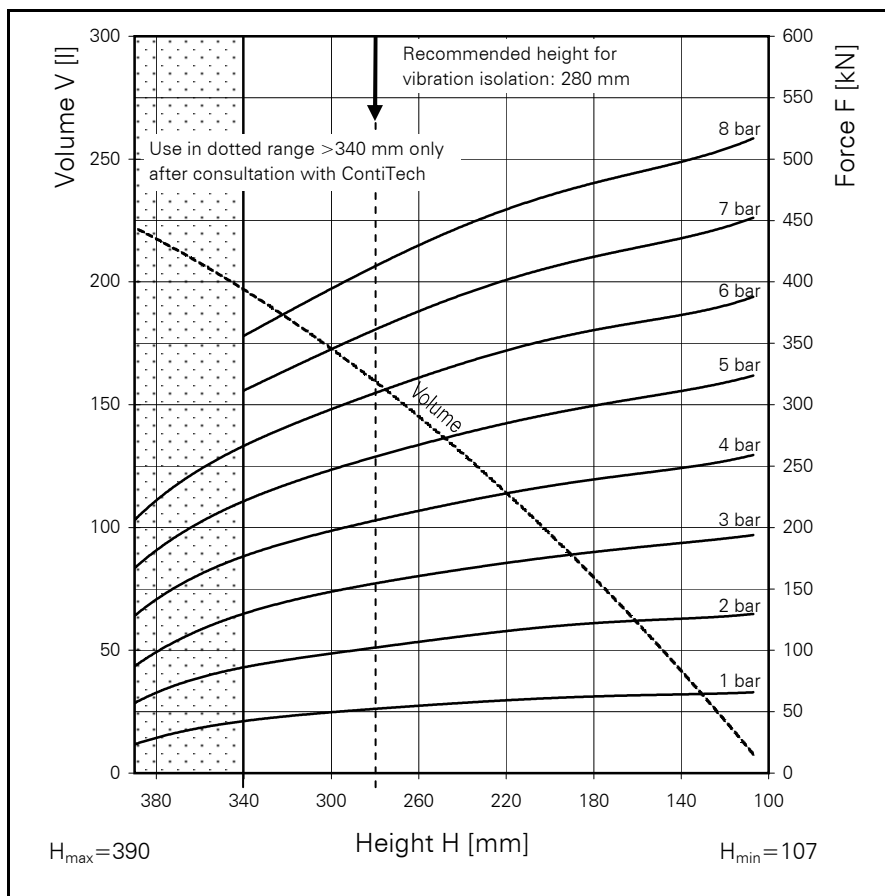
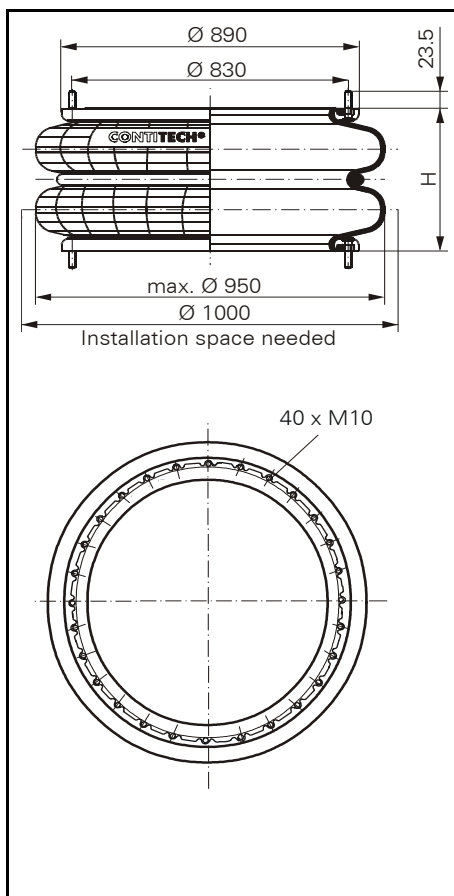


FD 5450-28

CONTI® Double Convolution Air Spring



FD 5450-28

Force-height diagram

Purchase order data

Type	Order No.
Rubber bellows only	61786
Bellows with bead rings 45mm bolts, nuts and washers	61908

Additional types on request

Technical data

Min. pressure	0 bar
Return force to min. height	≤ 1556 N
Overall weight with clamped plates	32.9 kg

Vibration isolation - dynamic characteristic values

Design height H: recommended 280mm, minimum 260mm

Pressure p [bar]	3	4	5	6	7	8	Vol V [l]
Force (Load) [kN]	157.3	204.9	260.8	312.3	363.8	415.3	
Spring rate [N/cm]	12690	15810	19360	22600	25840	29080	
Natural frequency [Hz]	1.4	1.4	1.4	1.3	1.3	1.3	

Pneumatic application - static characteristic values

Force F [kN]

Pressure p [bar]	3	4	5	6	7	8	Vol. (l)	
Height H [mm]	280	154.8	205.6	256.8	308.1	359.4		410.7
	240	165.9	221.9	277.7	334.8	390.5		446.3
	200	175.8	233.5	292.2	353.9	412.8		471.8
	160	184.1	243.5	304.6	365.2	426.0		486.9
	120	190.9	254.9	319.2	383.0	446.8		510.6



Service instructions  
M 10 = 40 Nm