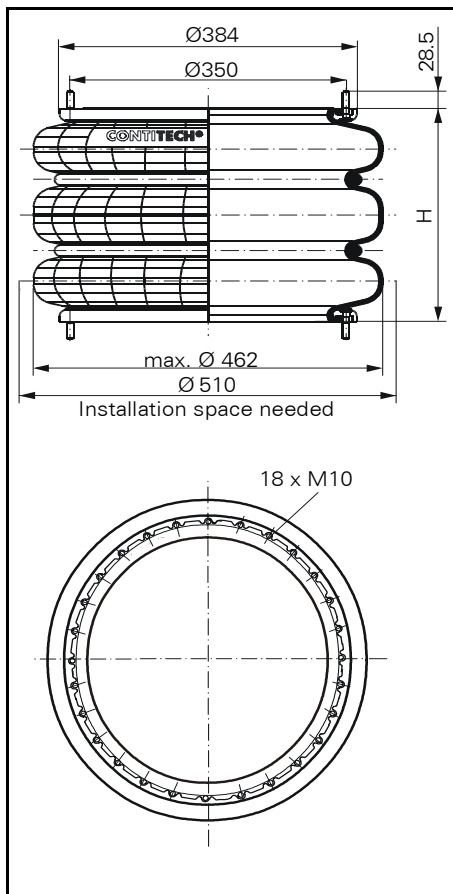
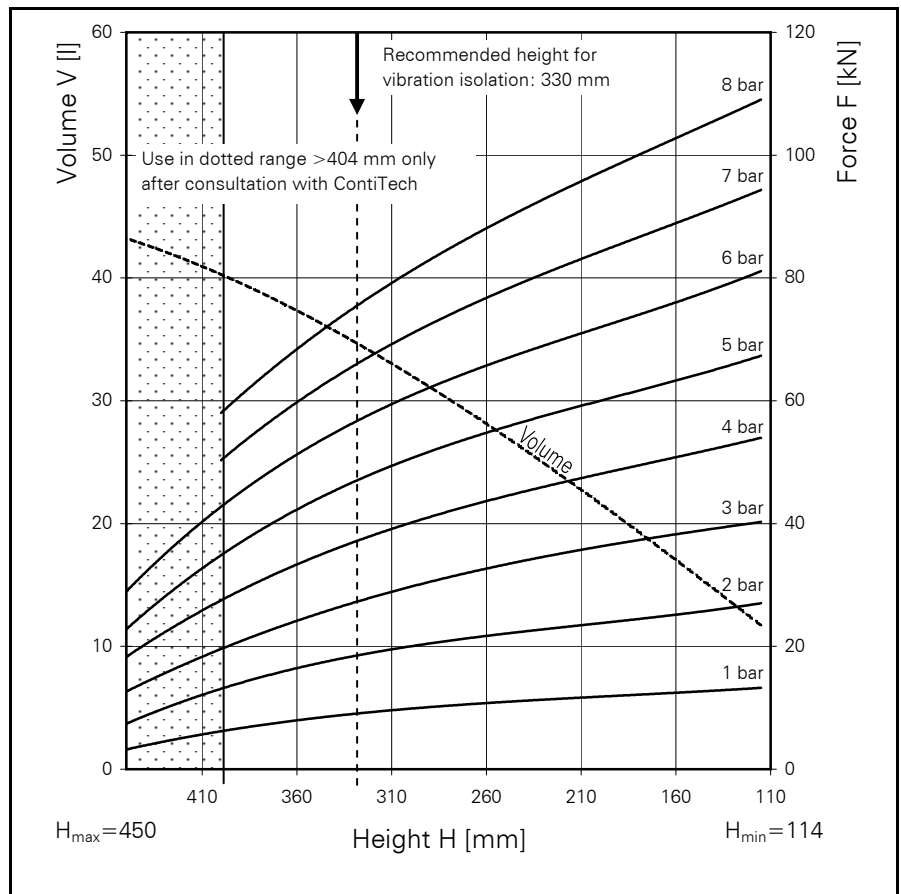


FT 960-34

CONTI® Triple Convolution Air Spring



FT 960-34



Force-height diagram

Purchase order data

Type	Order No.
Rubber bellows only	61777
Bellows with bead rings 45 mm bolts, nuts and washers	61909

Additional types on request

Technical data

Min. pressure	0 bar
Return force to min. height	≤ 600 N
Overall weight with clamped plates	9.3 kg

Vibration isolation - dynamic characteristic values

Design height H: recommended 330mm, minimum 315mm

Pressure p [bar]	3	4	5	6	7	8	Vol V [l]
Force (Load) [kN]	27.9	38.0	46.6	56.8	66.3	73.9	
Spring rate [N/cm]	2180	2810	3300	4010	4640	5130	
Natural frequency [Hz]	1.4	1.4	1.3	1.3	1.3	1.3	

Pneumatic application - static characteristic values

Force F [kN]

Pressure p [bar]	3	4	5	6	7	8	Vol.[l]	
Height H [mm]	400	19.2	27.3	35.0	43.2	50.3		58.0
	360	24.2	33.6	42.1	51.0	59.8		68.4
	320	28.3	38.0	48.3	57.9	67.3		77.2
	280	31.3	42.0	52.6	63.3	74.0		84.72
	240	33.9	45.1	56.7	68.1	79.6		91.3
	200	36.0	47.8	59.8	71.8	83.9		96.9
	160	38.4	51.3	63.5	76.2	89.1		103.0



Service instructions
M 10 = 40 Nm